

DEPARTS FROM SYDNEY - 5 JANUARY 2012 AND CRUISING THE SOUTH PACIFIC ISLANDS FOR 7 NIGHTS

THALASSA

GREEKFEST AT SEA



FEATURING DIRECT FROM GREECE 'THE SHOWMAN LE-PA'
LEFTERIS PANTAZIS
ACCOMPANIED BY HIS BAND AND 2 GUEST SINGERS

Also featuring an amazing line up of national artists including George Kapiniaris, Dimitri Kavvadas, Jessica Demertzi, George Diakonidis, Nikita Ellenis, Maria Diakonidis, Nick Paraskevadakis, together with the Thalassa band. DJ's on rotation: Nick Missailidis, Johnny G, Kosta Nico, Lil Nik, Costa Missa, Lambros, Funkmaster Chris C, Valandi and Dylan Manov. Plus Zorba Brothers and OPA Dance Darwin.

PRICING & INCLUSIONS

Quad Share from \$1384.00 Twin Share from \$1856.00

Sydney return - ports include Noumea and Isle of Pines.

All meals, gratuities (excluding drinks) and taxes onboard, plus a continuous line up of Greek Music artists and dancing.

For detailed information and bookings : tel **1300 247 371** email enquiries@thalassacruise.com.au

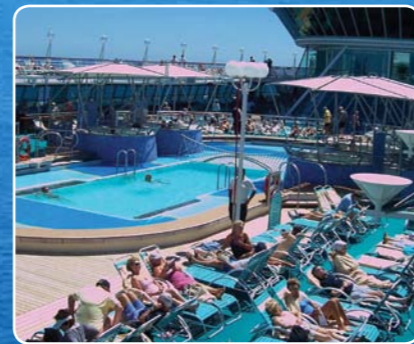
www.thalassacruise.com.au

THALASSA CRUISE presents a **GREEKFEST AT SEA** like no other! Featuring an amazing line up of Greek entertainment including the Greece's No. 1 Showman 'Le-Pa' - Lefteris Pantazis with his band and 2 guest singers plus the best musicians, singers, DJ's & dancers Australia wide. Also featuring the highly acclaimed comedian George Kapiniaris.

Come aboard the luxurious Rhapsody of the Seas and cruise the South Pacific Islands for 7 nights whilst enjoying the best in live Greek entertainment. Shows will be held in amazing on-board venues including the majestic Broadway Melodies Theatre, the Shall We Dance Lounge, the Viking Crown Lounge, the Showboat Lounge and the Schooner Bar & Pool. Enjoy breathtaking live performances, stand-up comedy and dance the hot balmy nights away to your favourite music played by Australia's best DJ's. Greek dance lessons will also be held every day. Come aboard, soak up the sun and party all night long! THALASSA CRUISE - A Greekfest like no other! OPA

Featuring a continuous line up of national and international Greek artists including: Lefteris Pantazis, George Kapiniaris, Dimitri Kavvadas, Jessica Demertzi, George Diakonidis, Nikita Ellenis, Maria Diakonidis, Nick Paraskevadakis and the Thalassa Band. Plus DJ's on rotation: Nick Missailidis, Johnny G, Kosta Nico, Lil Nik, Costa Missa, Lambros, Funkmaster Chris C, Valandi, Dylan Manov, Zorba Brothers, and Opa Dance Darwin.

SHIP FEATURES AND ACCOMMODATION



OWNERS SUITE

Queen-size bed, private balcony, private bathroom with bathtub, and a separate living area with queen-size sofa bed. Sleeps up to four people and can accommodate a rollaway bed and/or Pack 'n Play.

GRAND AND JUNIOR SUITES

Two twin beds (converts to queen-size bed) Private balcony with a view of the ocean Sitting area with sofa-bed Private bathroom with bathtub & vanity area Television, radio, telephone and refrigerator

SUPERIOR OCEANVIEW WITH BALCONY

Private balcony with a view of the ocean. Two twin beds (converts to queen-size bed). Private bathroom with bathtub & vanity area. Television, radio, telephone and refrigerator. Sitting area with sofa.

OCEANVIEW

Ocean view with two twin beds (converts to queen-size bed). Sitting area with sofa. Private bathroom with bathtub & vanity area. Television, radio, telephone and refrigerator.

INTERIOR STATE ROOM

Two twin beds (converts to queen-size bed). Private bathroom with shower & vanity area. Sitting area with sofa. Television, radio and telephone.

CABINS	TWIN (Per Person)	TRIPLE (Per Person)	QUAD (Per Person)
Interior Stateroom (Q)	\$ 1,856	N/A	N/A
Interior Stateroom (N)	\$ 1,919	N/A	N/A
Interior Stateroom (M)	\$ 1,973	\$1,580	\$1,384
Large Interior Stateroom (L)	\$ 2,027	N/A	N/A
Large Interior Stateroom (K)	\$ 2,081	\$1,652	\$1,438
Superior Interior Stateroom (J)	\$ 2,135	N/A	N/A
Ocean View Stateroom (I)	\$ 2,554	N/A	N/A
Ocean View Stateroom (H)	\$ 2,673	N/A	N/A
Ocean View Stateroom (G)	\$ 2,815	N/A	N/A

CABINS	TWIN (Per Person)	TRIPLE (Per Person)	QUAD (Per Person)
Ocean View Stateroom (F)	\$ 2,885	\$2,189	\$1,840
Family Ocean View Stateroom (FO)*	\$ 3,265	\$2,442	\$2,030
Superior Balcony Stateroom (D1)	\$ 3,538	\$2,623	\$2,167
Junior Suite (JS)	\$ 4,023	\$2,947	\$2,409
Grand Suite (GS)	\$ 5,585	\$3,995	\$3,195
Royal Family Suite (FS)**	\$ 6,123	\$4,347	\$3,459
Owners Suite (OS)	\$ 8,815	\$6,141	\$4,805

Children sharing as 3rd or 4th berth receive \$100 per child reduction

* Indicates it can sleep up to six (6) ** Indicates it can sleep up to eight (8)

ENTERTAINMENT LINE UP



Lefteris Pantazis is a real life superstar. The gold and platinum selling artist, aptly nicknamed 'The Showman Le-Pa', together with his band will deliver 3 performances that will leave you screaming for more.



George Kapiniaris is one of our best loved comedy, music and TV stars - leaving his indelible print on Aussie culture. He is best known for his role of 'Memo' in 'Acropolis Now' and his performance in 'Wogs Out Of Work'.



DJ Nick Missailidis launched Melbourne's Greek Music Scene. Nick has promoted and hosted most of the major Greek acts to grace our shores including Christos Dantis, Notis Sfakianakis & Despina Vandi.



Dimitri Kavvadas started his singing as the lead singer of Diplopenies. Dimitri has supported international acts including Lefteris Pantazis, Stathis Aggelopoulos, Zig Zag, Vasilis Saleas and released his own CD.



Jessica Demertzi won first place in the prestigious "Mo Awards" - National Junior Talent Search at 17. Since then she has continued to thrill audiences Australia wide and is set to release her debut CD.



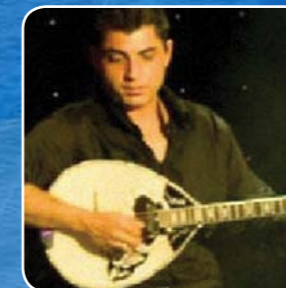
George Diakonidis exploded onto the Greek music scene as a talented singer at the acclaimed and much anticipated Greek spot Thalassa Live. He plays bouzouki with a real passion for Greek music.



Nikita Ellenis's career has lead him to sing with the likes of Lefteris Pantazis, John Tikis, Zig Zag, and Nikos Tsoumas and Triadafilo. He has released two singles "Ano Kato" and "De Fandasese".



Maria Diakonidis belongs to a family of entertainers. She has sung along side artists such as, Rita Sakelariou, Pitza Papadopoulou, Giorgos Margaritis, Gianni Vasilou and the Kaka Koritsia.



Nick Paraskevadakis with his bouzouki has worked with many Greek artists including Stamatis Gonidis, Lena Papadopoulou, Elena Paporizou, Giorgos Tsalikis, Christos Pazis, and countless others.



The amazing Thalassa Band comes on board to enthrall with their breathtaking live performances. Featuring 5 fantastic vocalists and an array of multi-talented musicians with composer Andrew Koikas.



Zorba Brothers Entertainment have been performing at all the Greek festivals Australia wide for the past 15 years. They have danced in Greece and featured on Hey Hey Its Saturday and Crown Casino Greekfest.



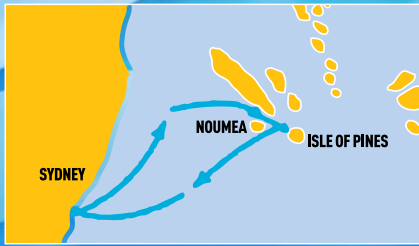
The OPA Dance Group of Darwin enjoys a long and proud history within the Greek community. They perform dances from all parts of Greece and are the major act at Darwins Greek Festival. OPA!



DEPARTS FROM SYDNEY - 5 JANUARY 2012 AND CRUISING THE SOUTH PACIFIC ISLANDS FOR 7 NIGHTS

THALASSA

GREEKFEST AT SEA



ENTERTAINMENT

- Greek music and live performances from Australia's leading artists
- Greek dancing shows & lessons
- Stand up Comedy performances
- Casino Royale
- Piano Bar

ACCOMMODATION

All onboard staterooms feature

- Television, telephone & radio
- Ensuite facilities
- Vanity area with hair-dryer
- Dedicated stateroom attendant

RHAPSODY OF THE SEAS

Known as the 'ship of light'. *Rhapsody* is sleek and modern with a warm atmosphere throughout its 11 decks of entertainment. Warm woods, sun-filled atriums, marble staircases and buttery leathers all help contribute to a feeling of relaxed elegance.

The ship will have two ports of call - **Noumea** and **Isle of Pines**. This is the perfect opportunity to stretch your legs, wander the South Pacific islands and meet the locals. Here you can spend the day looking at all the attractions and picking up that special souvenir of your trip.

MEALS

- Fine dining in main dining room
- Casual dining and buffet style restaurant
- Pizza parlour and icecream bar
- Midnight delight snack service with buffet
- Free room service
- Non-stop ice-water, tea, coffee and lemonade

FITNESS

- Stair steppers, stationary bikes, spinning bikes, treadmills, free weights
- Elliptical machines
- Special aerobic/yoga classes
- Sauna, jacuzzi and steamroom

TERMS AND CONDITIONS

WHAT'S INCLUDED IN THE HOLIDAY PRICE (per person - twin share)

- cruise aboard Royal Caribbean's "Rhapsody of the Seas"
- all meals, entertainment and gratuities onboard (excluding drinks.)
- port charges and government taxes

Costs are per adult in \$AUD and are based on a twin sharing basis. Single travellers must pay a single supplement. Costs are subject to change with or without notice.

WHAT'S NOT INCLUDED IN THE HOLIDAY PRICE

- airfare, passport and fees, insurances of all kinds
- laundry, phone calls, beverages, items of a personal nature, optional excursions etc.

The price does not cover costs and expenses, including the return to your home, if you leave the cruise at your own volition, or due to illness, or as a consequence of official action by the government.

RESERVATIONS AND PAYMENTS

Once you have decided to book Thalassa Greekfest Cruise, simply ask your Cruiseeco agent to book it with us.

On confirmation of your booking, a written confirmation will be sent to your Agent.

Upon confirmation it will be necessary for you to pay a deposit of 25% of the fare to secure your booking. A further payment of 25% must be paid by 1st February 2011. Bookings made after 1st February 2011 required a single 50% deposit. Monthly installments can be arranged by your travel agent.

This deposit secures your cruise berth. Final payment is due 1 September 2011 or before.

Any special meal requirements will be made on a "request" basis only. We cannot guarantee special meal requests nor will we assume any responsibility or liability if passengers' special meal requests are not fulfilled.

TRAVEL DOCUMENTS

Travel documents will be sent to you approximately 21 days prior to departure from Australia (providing full payment has been received). If you are leaving home earlier please ask your Cruiseeco Travel Agent to request your travel documents in good time.

BOOKING CHANGES, CANCELLATIONS AND REFUNDS

In the unfortunate event that you should have to cancel your holiday, we must be notified in writing. The day that we receive this notice in writing, will be considered the date your cancellation has been made. Certain cancellation fees apply to your holiday if cancelled after a deposit or final payment has been made. These cancellation fees will be levied by the shipping company and will be greater the closer to your travel date that you cancel. You should check very carefully with your Travel Agent what these fees are, before you make your booking.

Booking Changes: A fee of \$25 per person will be charged for any revision or alteration made to a reservation after the booking is confirmed unless the change increases the value of the booking.

Please note, this does not apply to name changes or cabin downgrades, which are considered cancellations, and normal cancellation fees will apply.

CANCELLATIONS AND CANCELLATION FEES:

Notice of cancellation must be made in writing to your Cruiseeco Travel Agent.

The following scale of charges will apply when notice of cancellation is received prior to holiday departure:

NO. OF DAYS PRIOR TO DEPARTURE AS % OF TOTAL PRICE (per person)

- Immediately to 20 October 2010 - \$150 per person
- 21 October 2010 - 28 January 2011 - \$250 per person
- 29 January 2011 - 30 April 2011 - Loss of Deposit
- 01 May 2011 - 30 June 2011 - 50% or Deposit, whichever is higher
- 01 July 2011 - 30 August 2011 - 75% or Deposit, whichever is higher
- 01 September 2011 - no show - 100%

These cancellation fees are in addition to any cancellation fees that may be levied by your Travel Agent.

